



## Main Service Entrance AC Surge Protection

### SurgePurge330



*Citel's SurgePurge 330 model provides iZero-margini surge suppression capability for your facility's service entrance for both conducted (10/350µs) and induced (8/20µs) transient overvoltages originating from severe lightning and utility switching events. These protectors incorporate Citel's reliable ihigh intensityi modules with individually monitored and fused MOVs. Designed to provide rugged, high quality surge protection at the most critical points within a facility's distribution system.*

#### Applications

- Service entrance master distribution switchboard
- Facility located on heavy industrial power grid
- Motor Control Centers

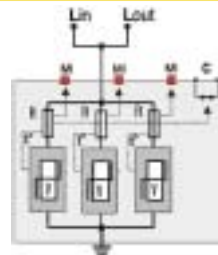
#### Standards & Guidelines

UL 1449 2nd Edition	USA
IEC 61643-11	International
ANSI/IEEE C62.41	USA
NFC 61740-95	France
VDE0675-6	Germany
CSA C22.2	Canada

#### Service Entrance Protection

- 330kA transient amps protection (8/20µs)
- 60kA transient amps protection (10/350µs)
- Heavy-duty busbar, modular construction
- Multi-redundant protection circuit per phase
- Full On-Board Diagnostics— Dual stage fault indicators, remote & audible alarms
- 60A, 200kAIC fused disconnect switch
- 10-Year warranty

#### Electrical Diagram



V: High-energy varistor  
 Ft: Thermal fuse  
 C: Remote signaling contact  
 t°: Thermal disconnection  
 MI: Disconnection indicator

#### Specifications

Citel Model SP330	-120Y -120T	-240Y -240D	-277Y -347Y	-480D
System Voltage	120/208V 120/240V	240/415V 240V	277/480V 347/600V	480V
MCOV	150V 150V	250V 250V	330V 440V	550V
Ipeak 8/20µs	330kA	330kA	330kA	330kA
Ipeak 10/350µs	60kA	60kA	60kA	60kA
ClampV @ 10kA*	575V	820V	925V 1210V	1480V
ClampV @ 500A*	415V	710V	820V 905V	1410V
Diagnostics	Dual stage fault indicators, remote alarm and audible alarm.			
Housing Materials	NEMA 4/12			
Operating Temperature	-40°C to +85°C			
Operating Altitude	13,000 ft (4,000m)			
Connection Method	Parallel			
Protection Type	MOV-GDT based hybrid			
Connection	screw terminals, up to #2 AWG			
Protection Modes	L-N, L-G, N-G, L-L			
Dimensions	15Hx15Wx7.5D (in inches)			

\*Clamp voltages taken from models with internal disconnect.